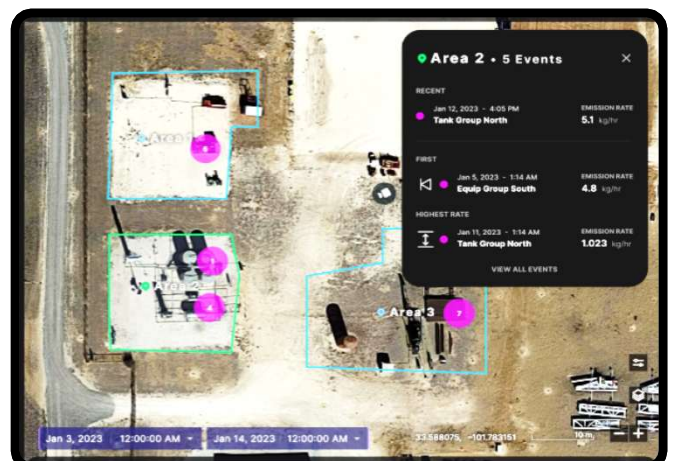




# QUANTUM LIDAR METHANE CAMERA SYSTEM

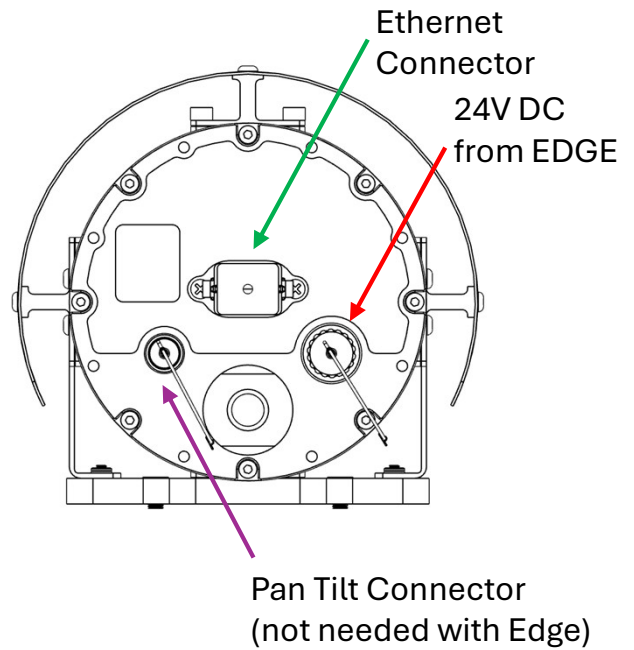
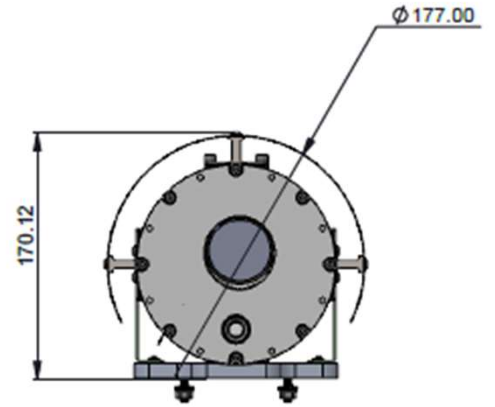
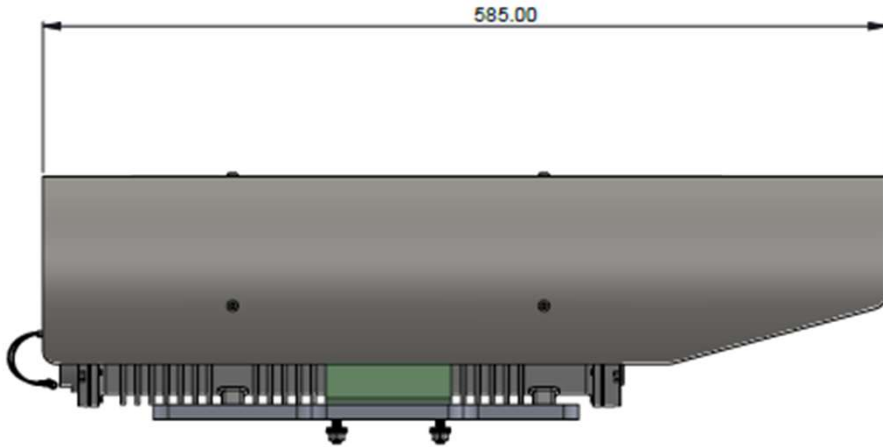


- Long-range infrared lidar cameras for industrial and environmental methane monitoring.
- Detect, image, locate, and quantify all emissions in 3-D and real-time.
- Operate autonomously, continuously 24/7 with intelligence across all industrial environments.
- Provide traceable site surveys and custom reports for process control and regulatory compliance.

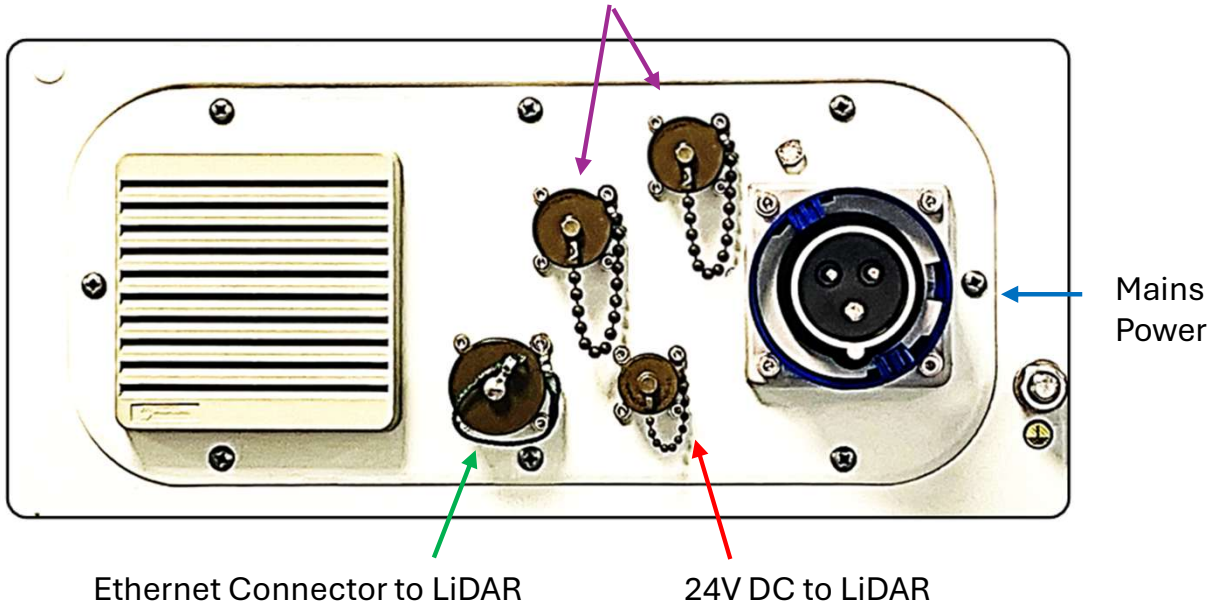




# QUANTUM LIDAR METHANE CAMERA & EDGE HARDWARE



RS485 for Pan Tilt and Anemometer





# QUANTUM LIDAR METHANE

## SYSTEM SPECIFICATIONS

Parameter	Min	Max	Units	Comments
METHANE DETECTION & QUANTIFICATION				
Methane Concentration Pathlength Accuracy	<+/- 10%		ppm.m	For calibrated methane cell at STP
Methane Leak Rate Accuracy	Within a factor of 2 (dependent on accuracy of wind measurement)			
Methane Leak Detection Limit	<0.1	>10,000	kg/hr	Dependent on windspeed and range
Lower Limit of Detection vs Wind Speed	< 1	< 10	m/s	Windspeed
LOD for< 100m range	0.2	2.0	kg/hr	90% probability
LOD for <200m range	0.4	4.0	kg/hr	90% probability
Methane Detection Range	10	>200	m	
False Positive Reports	Zero with recommended settings for customer configurable leak rate thresholds			
Lidar Field of View	<1	18	Degrees	Circular images, >20x optical zoom
Methane Imaging Exposure Time	30	>600	s	Fast images have lower resolution
Methane Image Resolution	2	10	cm	Dependent on range and image time
Laser Output		<10	mW	Class 1, 1651nm, completely eye safe
Visible Camera	1080 x 1920, RGB, auto focus, auto exposure level			
Pan Range	355		degrees	Allows full 360 degrees visibility
Tilt Range	-45	+90	degrees	Range centre can be adjusted
ENVIRONMENTAL				
Operating Temperature	-20	+50	°C	Qualifying -40 to +70°C
Storage Temperature	-40	+70	°C	
Humidity	0	95	%	Noncondensing
Environmental Conditions	Day or night, unaffected by thermal contrast, sunlight, or moderate winds (mast dependent)			
Precipitation	Moderate rain, fog and snow			
Altitude	-400	+3000	m	
ELECTRICAL INTERFACE				
Edge Controller Supply Voltage	100	250	VAC	115/240, 6A fuse nominal
System Power Consumption		<250	W	Includes max rating for AP30 Pan/tilt
Connectivity	Global 4G, wifi, or ethernet			
DIMENSIONS				
Lidar size	18cm diameter by 43cm long, weather shield 58cm long			
Lidar weight		4	kg	
Lidar on Pan/tilt stage weight	8	10	kg	
Edge size	23cm deep by 50 x 47 cm square			
Edge weight		20	kg	
Mast Height	1.5	30	m	Typical 15m

All specifications are subject to change without notice    Revision date July 2025